



The aesthetic lithium disilicate system
Pressing ■ Layering ■ Staining



The VINTAGE LD concept

is a highly aesthetic all-ceramic system based on lithium disilicate.

This concept consists of three perfectly matched components, which also provide excellent results when used individually, thanks to their superior material characteristics. The combination of high-strength lithium disilicate glass ceramic ingots, a silicate glass build-up porcelain and low-fusing stains offers modern and versatile solutions for all indications and aesthetic requirements of all-ceramic anterior and posterior restorations.

VINTAGE LD Press

Vintage LD Press lithium disilicate ingots feature high strength and durability and come in four levels of translucency.

This selection provides unlimited possibilities in the production of highly aesthetic durable crowns, veneers, inlays, onlays and three-unit anterior bridges.



VINTAGE LD Porcelain

Vintage LD porcelain is based on silicate glass and matched to lithium disilicate frameworks, thanks to its dense and microfine particle structure.

The materials are easy to apply, and their exceptional light diffusion ensures natural colour reproductions even with thin layers, especially in anterior restorations.



VINTAGE Art LF

Vintage Art LF low-fusing, fluorescent porcelain stains perfectly complete the system of Vintage LD Press and porcelain.

They are highly opaque and suitable for internal and external shade modifications with unique depth of colour and translucency.



The VINTAGE LD techniques

Vintage LD combines aesthetics with cost effectiveness: All-ceramic restorations can be created either by the efficient staining technique or the highly aesthetic cut-back or layering technique, depending on procedural or individual requirements.

Staining technique

Fully anatomical Vintage LD Press restorations are customised with Vintage Art LF porcelain stains after contouring.

This technique is ideal for posterior restorations and inlays/onlays. Aesthetic results can be achieved in a very short time.



Cut-back technique

Restorations are produced to almost full contour using Vintage LD Press. Only the vestibular incisal area is built up with opalescent Vintage LD porcelains.

This technique helps to create aesthetic restorations even when space is limited.



Layering technique (full build-up)

This is the method of choice for cases with high and very individual aesthetic demands.

The Vintage LD Press framework design allows all desired Vintage LD porcelains to be conventionally built up in a free, customised layering technique.

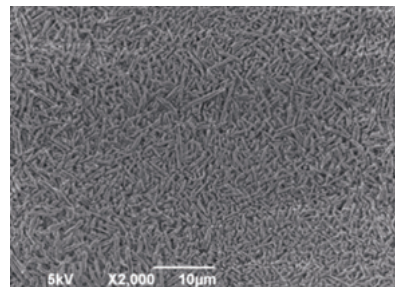


VINTAGE LD Press



High mechanical strength

Due to the composition and the interlinked crystalline structure, the lithium disilicate glass ceramic features an extremely high crack resistance and a mechanical strength of up to 400 MPa.



VINTAGE LD Press translucencies for maximum flexibility

T: High translucency in 3 shades

T-ingots are highly translucent and ideally indicated for the fabrication of smaller restorations such as inlays, onlays and veneers with staining technique.

MT: Medium translucency in 19 VITA* Classical and 3 SHOFU whitening shades

MT-ingots are moderately translucent and suitable for the cut-back, full build-up layering and staining technique.

LO: Low opacity in 5 shades

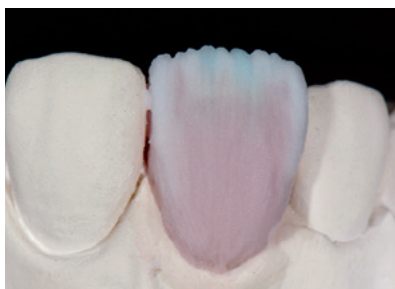
LO-ingots are ideally suitable for customised abutments or slightly discoloured preparations. The anatomical shape can be individually layered with Vintage LD porcelain by full build-up or cut-back layering technique.

MO: Medium opacity in 3 shades

MO-ingots are ideally suitable for the production of frameworks on strongly discoloured preparations. The anatomical shape can be individually layered as with LO-ingots with Vintage LD porcelain by full build-up or cut-back layering technique.

* VITA is a registered trademark of VITA Zahnfabrik, Bad Säckingen, Germany.

VINTAGE LD Porcelain



The porcelain system

The low-fusing Vintage LD porcelain range includes 17 classic body shades and various opaque dentine shades, 5 opalescent incisal shades and 10 translucent shades for the creation of exceptionally natural colour accents.

In addition to conventional layering, Vintage LD porcelain can also be used to correct the shades of Vintage LD Press or applied to other lithium disilicate glass ceramic materials.

- Highly aesthetic build-up porcelain
- Specially matched to lithium disilicate
- Low firing temperature (approx. 760 °C)
- Easy and convenient to handle
- Quickly and effectively polished

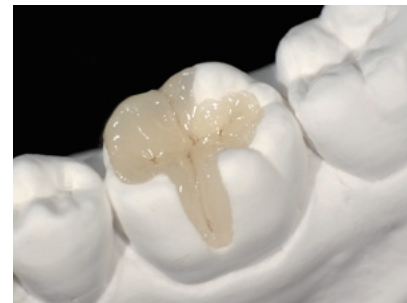
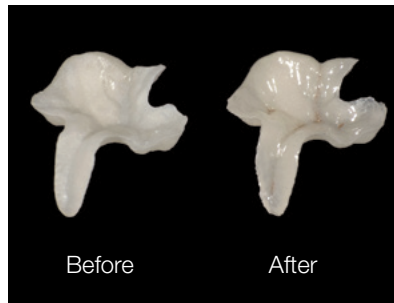


VINTAGE Art LF



Vintage Art LF are ready-to-use, low-fusing paste stains.

Their fluorescence and shade characteristics are based on the shade effects of natural teeth.



Shade characterisation

Vintage Art LF porcelain stains feature a micro-fine particle structure and a pleasant consistency. With 23 different stains and a glazing paste, all aesthetic requirements can be met.

Vintage Art LF may be used to customise or modify the shades of Vintage LD Press, Vintage LD porcelain and almost all other dental ceramic materials, such as Vintage PRO, Vintage MP, Vintage ZR or Vintage Halo.

Ready-to-use, no mixing necessary

Suitable for all milled, pressed and layered ceramics

Low firing temperature (approx. 770 °C)

Highly aesthetic, thanks to 23 different stains

Consistent colour concept

Shade systems

VINTAGE LD Press

SHADE	W1	W2	W3	A1	A2	A3	A3.5	A4	B1	B2	B3	B4	C1	C2	C3	C4	D2	D3	D4	
VINTAGE LD PRESS	-			T-1			T-2		T-3		T-1		T-2		T-3		T-1		T-3	
	MT-W1	MT-W2	MT-W3	MT-A1	MT-A2	MT-A3	MT-A3.5	MT-A4	MT-B1	MT-B2	MT-B3	MT-B4	MT-C1	MT-C2	MT-C3	MT-C4	MT-D2	MT-D3	MT-D4	
	-			MO-1			MO-2		MO-1		MO-2		MO-1		MO-3		MO-1		-	

VINTAGE LD Porcelain

SHADE	W1	W2	W3	A1	A2	A3	A3.5	A4	B1	B2	B3	B4	C1	C2	C3	C4	D2	D3	D4																	
OPAQUE DENTIN	-			OD-A1			OD-A2		OD-A3		OD-A3.5		OD-A4		OD-B2		OD-B4=1:1		OD-C2		OD-C4=1:1		OD-D3		OD-D4=1:1											
BODY	-			A1B			A2B		A3B		A3.5B		A4B		B1B		B2B		B3B		B4B		C1B		C2B		C3B		C4B		D2B		D3B		D4B	
OPAL ENAMEL	OPAL 56	OPAL 56 OPAL 57 =2:1	OPAL 56 OPAL 57 =1:1	OPAL 57	OPAL 58	OPAL 59	OPAL 60	OPAL 57	OPAL 58	OPAL 59	OPAL 60	OPAL 58	OPAL 59	OPAL 60	OPAL 57	OPAL 58	OPAL 59	OPAL 60	OPAL 57	OPAL 58	OPAL 59	OPAL 60	OPAL 57	OPAL 58	OPAL 59	OPAL 60										

OPAQUE DENTIN	OD-N									
OPAL ENAMEL	OPAL 56	OPAL 57	OPAL 58	OPAL 59	OPAL 60					
ENAMEL EFFECT	T	T-Glass	OPAL T	OPAL SL	BT	PT	GT	YT	OT	AM-Y

GUM COLOR	GUM-1	GUM-2	GUM-3	GUM-4	GUM-5
CORRECTION	ADD-ON B	ADD-ON T	-		

VINTAGE Art LF

SHADE	EXAMPLE OF USE				
	Shade adjustment	Cervical	Stain	Incisal	Gum
P	●	●			●
Y	●	●			
Bl	●	●		●	
O	●	●	●		●
V	●	●		●	●
Gr	●	●	●		
B	●	●	●	●	
W	●			●	
DR-Br	●	●	●		
Br	●	●	●		
O-Br	●	●	●		
B-Br	●	●	●		

SHADE	EXAMPLE OF USE				
	Shade adjustment	Cervical	Stain	Incisal	Gum
K	●	●	●		
G	●	●	●		
Bl-G	●	●		●	
CY	●	●	●		●
RP	●	●	●		●
WR	●	●	●		
Vn	●			●	
AS	●	●	●		
BS	●	●	●		
CS	●	●	●		
DS	●	●	●		

A1 A2 A3 A3.5 A4 rootA
 B1 B2 B3 B4 rootB
 C1 C2 C3 C4 rootC
 D2 D3 D4

Order information

VINTAGE LD - Basic Set



Vintage LD:

A1, A2, A3, A3.5, B2, B3

6x Body, 4x Opal Enamel, Opal Effect, 15 g each

Vintage Art LF:

4 stains, 3 g each • Glazing Paste, 5 g

Vintage Art LF Stain Liquid, 50 ml

Vintage Mixing Liquid HC, 50 ml

Instructions for use

VINTAGE LD - Starter Set



Vintage LD:

2x Body (A2/A3), 2x Opal Enamel, Opal Effect, 15 g each

Vintage LD Press:

5 ingots, 3 g each: 2x MT-A2, 2x MT-A3, 1x T-1

Vintage Art LF: 2 stains, 3 g each • Glazing Paste, 5 g

Ceravety Press & Cast: 5x powder, 100 g each • liquid, 100 ml

Vintage Art LF Stain Liquid, 50 ml • Vintage Mixing Liquid HC, 50 ml

Instructions for use

VINTAGE LD - Enamel Effect Set



Opal Enamel 56, 15 g, 9x Enamel Effect, 15 g each

Instructions for use

VINTAGE LD Press - Trial Kit



5 ingots, 3 g each: 2x MT-A2, 2x MT-A3, 1x T-1

VINTAGE Art LF - Effect Set



17 shades, 3 g each: Pink, Rose-Pink, Corn-Yellow, Blue-Gray, Gray, Orange, Violet, Wine-Red, Vanilla, White, Orange-Brown, Black-Brown, Khaki, A-Shadow, B-Shadow, C-Shadow, D-Shadow

Glazing Paste, 5 g • Vintage Art LF Stain Liquid, 50 ml

Colour table • Instructions for use

For more information on the single components (Vintage LD Press ingots / Vintage LD porcelains / Vintage Art LF stains), please refer to our SHOFU website at www.shofu.de.



SHOFU INC. 11 Kamitakamatsu-cho, Fukuine, Higashiyama-ku, Kyoto 605-0983, Japan
SHOFU DENTAL GmbH An der Pönt 70, 40885 Ratingen, Germany, www.shofu.de

SHOFU is a registered trademark of SHOFU INC. All other trademarks and registered trademarks are the property of their respective holders. SHOFU INC. reserves the right to change specifications without notice.